

MEC

1000 - 1600 - 2000 - 3000
4000 - 5000 - 6500 - 8000

Technical catalogue

Catalogo tecnico

Technischer Katalog



Battioni®
Pagani

Setting the pace since 1953

Battioni Pagani Pompe S.p.A.

Via Enzo Ferrari, 2
43058 Sorbolo (PR) - Italy

Ph. +39 0521 663203

Fax +39 0521 663206



www.bapag.it
info@bapag.it





Battioni®
Pagani

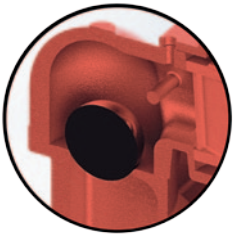
Setting the pace since 1953

Predisposition for overpressure valve

Predisposizione per valvola di sovrappressione
Vorbereitung für Überdruckventil

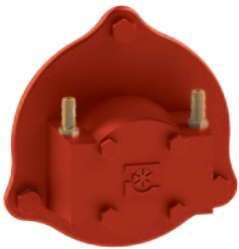
Non-return check valve as standard

Valvola di non ritorno di serie
Kontrollventil als Serie



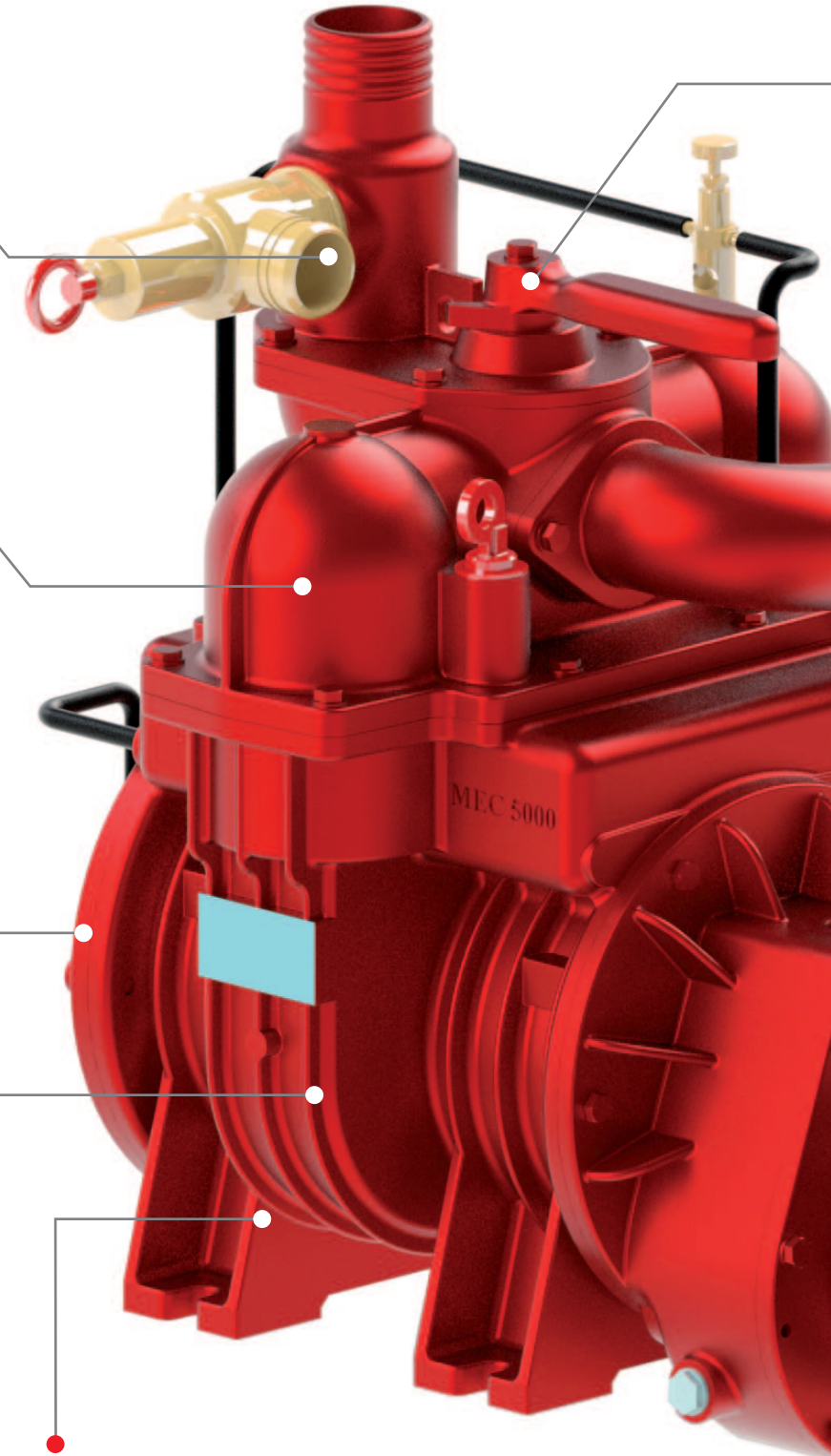
**Forced lubrication pump as standard
(automatic lubrication on request)**

Pompa di lubrificazione forzata di serie
(lubrificazione automatica a richiesta)
Druckschmierung als Serie (Automatische
Schmierung auf Anfrage)



Long Life blades on request

Palette Long Life resistenti al calore a richiesta
Auf Anfrage hitzebeständigen Lamellen Long Life



**High wearing resistance thanks to cast-iron
with high hardness**

Elevata resistenza ad usura grazie a ghisa ad
alta durezza

Hohe Festigkeit zu Abnutzung für
Gußeisen mit hohe Härte



Cooling



**AIR COOLED
ROTARY VANES
VACUUM/PRESSURE
PUMP**



Selector vacuum - pressure

- Selettore Vuoto - Pressione
- Wähler von Vakuum/Druck

Blades inspection hole

- Foro ispezione palette
- Bohrung für Lamellen Prüfung



VERSIONS



MEC - M



MEC - P



MEC - D



MEC - H

MEC is the most copied pump at the world



MEC 1000/1600 – Light and compact design

The reliability and strength of the MEC is the result of continuous design and manufacturing improvements accomplished during 40 years of deployments. Its light and compact design made MEC 1000/1600 the best vacuum pump for portable sanitation services and small vacuum tank for liquid applications.



STANDARD FEATURES

- 4-ways valve, non-return check valve.
- Available hoses connections: Ø 27 mm / Ø 45 mm / G 1"
- Thread for Overpressure valve: Not available

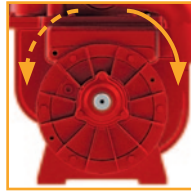
VERSIONS

CCW as standard



Version M
Splined shaft
1"3/8 - Z6 ISO 500

CCW on request CW as standard



Version P
Smooth Cylindrical shaft
Ø 22, length 48 mm
Parallel key UNI 6604

TECHNICAL DATA

	Geometrical capacity			Max rpm		Max abs pressure Bar (PSI)	Max vacuum % (inHg)	Max continuous vacuum % (inHg)	Power at max vacuum kW (HP)	Weight kg	
	m³/h	l/min	cfm	M	P					M	P
MEC 1000	75,6	1260	45	600	1400	2,5 (36)	89% (26,3")	60% (18")	3,5 (4,7)	40	34
MEC 1600	118,8	1980	70	600	1400	2,5 (36)	89% (26,3")	60% (18")	4,5 (6)	48	42

OPTIONALS



Long Life Blades



Automatic Lubrication
Single lubrication point



Battioni Vacuum Pump Oil
Code 5070200100



Customized Painting

ACCESSORIES



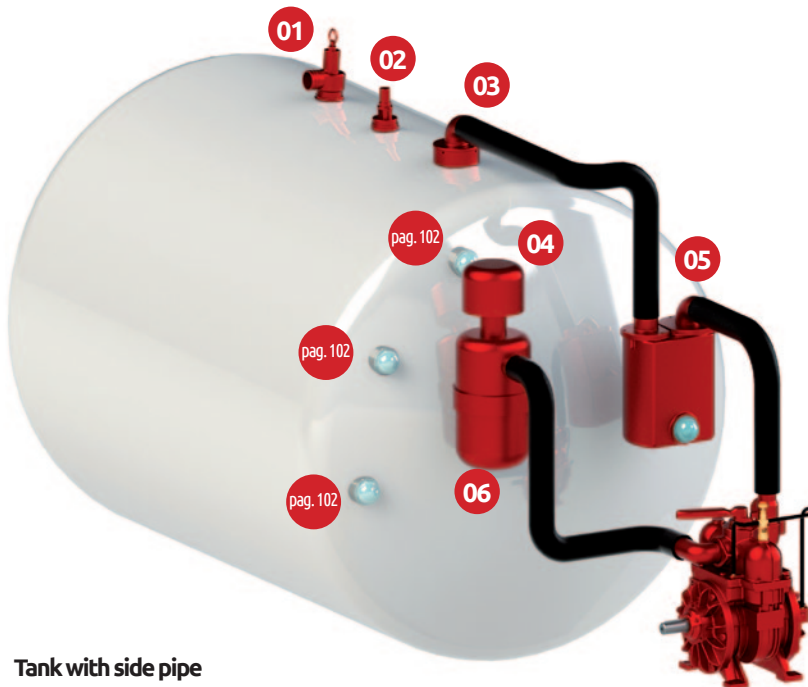
01 Overpressure Safety Valve - 1"1/4

Code 5100200009
Setting range:
+0,3 bar / +1,5 bar
Working temperature:
-20°C / +90°C
Thread: G 1"1/4
Weight: 0,94 kg



02 Vacuum Relief Valve 1"1/2

Code 5100200012
Setting range:
-0,3 bar / -0,8 bar
Working temperature:
-20°C / +90°C
Thread: G 1"1/2
Weight: 0,65 kg



Tank with side pipe



06 Filter-Silencer
Code 5090000110
Hose connection: Ø 45 mm
Weight: 2,5 kg



04 Rain Cap
Code 5090000060
For Filter/silencer only



03 Primary Overflow Valve - Single Rubber Ball

Code 6100200006 - Ø45
Iron ring to be welded
Weight: 4,5 kg



05 Secondary Valve - Single Rubber Ball

Code 6100200003 - Ø45
Weight: 17,5 kg



05A Discharge Valve - 3/4"
Code 5040200006
To be fitted on Secondary valve



05B Gauge - Ø 80 mm Axial Connection

Code 5101700007
To be fitted on Secondary valve



MEC

2000 - 3000 - 4000



Battioni®
Pagani

Setting the pace since 1953

MEC 2000 / 3000 / 4000 – Simple and practical design

The reliability and strength of the MEC is the result of continuous design and manufacturing improvements accomplished during 40 years of deployments. It's simple and practical design made the MEC pumps the product of reference for agricultural and municipalities septic applications.



STANDARD FEATURES

- Forced lubrication, 4-ways valve, non-return check valve
- Available hoses connections: Ø 45 mm / Ø 60 mm / 2"
- Thread for Overpressure valve: G 1"1/4

VERSIONS

CCW as standard



Version M
Splined shaft
1"3/8 - Z6 ISO 500

CCW on request CW as standard



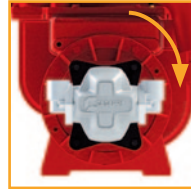
Version P
Smooth Cylindrical shaft
Ø 30, lenght 70 mm
Parallel key UNI 6604

CCW as standard



Version D
Splined shaft
1"3/8 - Z6 ISO 500

CW as standard



Version H
MEC 2000: Group 3 26.7 cc/rev - Pmax 280 bar - In G 1" - Out G 3/4"
MEC 3000: Group 3 26.7 cc/rev - Pmax 280 bar - In G 1" - Out G 3/4"
MEC 4000: Group 3.5 43.98 cc/rev - Pmax 250 bar - In G 1" - Out G 1"

TECHNICAL DATA

	Geometrical capacity			Max rpm		Max abs pressure Bar/PSI	Max vacuum % (inHg)	Max continuous vacuum % (inHg)	Power at max vacuum kW (HP)	Weight kg			
	m³/h	l/min	cfm	M	P/D/H					M	P	D	H
MEC 2000	165	2750	97	600	1400	2,5 (36)	91% (27,0")	60% (18")	5,5 (7,3)	75	65	65	69
MEC 3000	216	3600	127	600	1400	2,5 (36)	92% (27,2")	60% (18")	7 (9,4)	87	77	77	80
MEC 4000	261	4350	154	600	1400	2,5 (36)	94% (28,0")	60% (18")	9 (12,6)	100	90	90	93

OPTIONALS



Long Life Blades



Automatic Lubrication
Single lubrication point



Side Outlet
With two revolving elbows



Double Outlet
Ø 60 mm



Revolving Elbow
Ø 51 mm (2") /
Ø 60 mm



EN 707 Lever
Code 6080200162



Hydraulic Changeover
Code 6080200217



Hydraulic Revolving Changeover
Code 5090000008



Pneumatic Revolving Changeover
Code 6080200160



Battioni Vacuum Pump Oil
Code 5070200100



Customized Painting

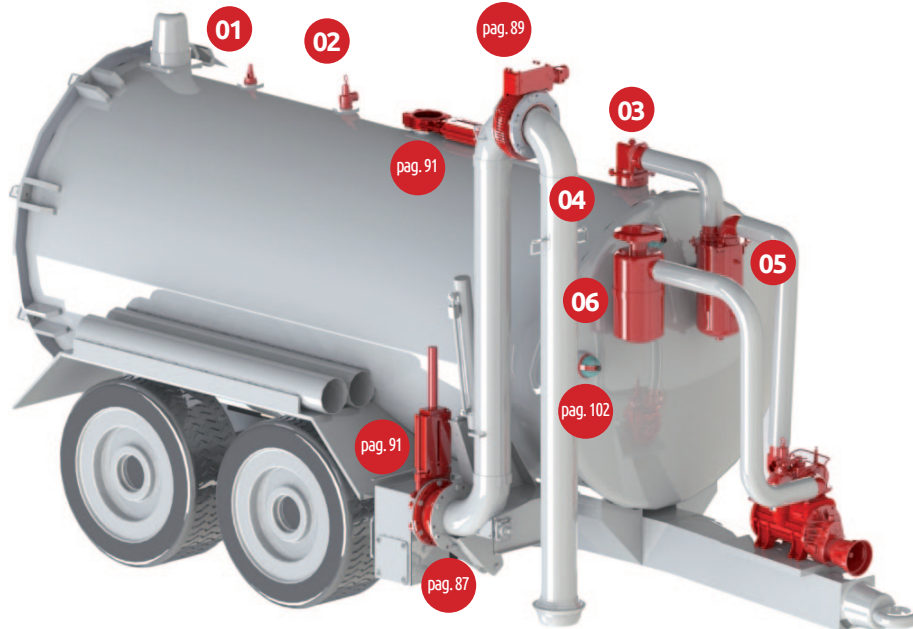
ACCESSORIES



**Vacuum Relief Valve
1"1/2**
Code 5100200012
Setting range:
-0,3 bar / -0,8 bar
Working temperature:
-20°C / +90°C
Thread: G 1"1/2
Weight: 0,65 kg



**Overpressure Safety
Valve - 1"1/4**
Code 5100200009
Setting range:
+0,3 bar / +1,5 bar
Working temperature:
-20°C / +90°C
Thread: G 1"1/4
Weight: 0,94 kg



Tank with side pipe



Filter - Silencer
Code 5090000083 - Ø 60
MEC 3000 - 4000
Code 5090000110 - Ø 45
MEC 2000
Weight: 3,9 kg



Rain Cap
Code 5090000060
For Filter/silencer only



Pre-Filter
Code 5090000045
For Filter/silencer only



**Primary Overflow
Valve - Single Rubber
Ball**
Code 6100200006 - Ø 45
Code 6100200007 - Ø 60
Iron ring to be welded
Weight: 4,5 kg



**Secondary Valve -
Single Rubber Ball**
Code 6100200003 - Ø 45
Code 6100200004 - Ø 60
Weight: 17,5 kg



Discharge Valve - 3/4"
Code 5040200006
To be fitted on Secondary
valve



**Gauge - Ø 80 mm Axial
Connection**
Code 5101700007
To be fitted on Secondary
valve



MEC

5000 - 6500 - 8000



**Battioni®
Pagani**

Setting the pace since 1953

MEC 5000 / 6500 / 8000 – The Legend

More than 500.000 MEC pumps have been put in operation to empty cesspits and transport slurry in agricultural and industrial applications. The reliability and strength of the MEC is the result of continuous design and manufacturing improvements accomplished during 40 years of deployments.

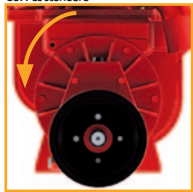


STANDARD FEATURES

- Forced lubrication, 4-ways valve, check valve
- Thread for Overpressure valve: G 1"1/2
- Available hoses connections: Ø 60 mm / Ø 76 mm (3") / Ø 80 mm

VERSIONS

CCW as standard



Version M
Splined shaft
1"3/8 - Z6 ISO 500

CCW on request CW as standard



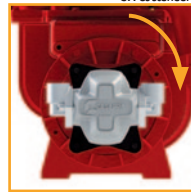
Version P
Smooth Cylindrical shaft
Ø 32, lenght 70 mm
Parallel key UNI 6604

CCW as standard



Version D
Splined shaft
1"3/8 - Z6 ISO 500

CW as standard



Version H
MEC 5000: Group 3.5 43.98 cc/rev - Pmax 250 bar - In G 1" - Out G 1"
MEC 6500: Group 3.5 43.98 cc/rev - Pmax 250 bar - In G 1" - Out G 1"
MEC 8000: Group 3.5 51.83 cc/rev - Pmax 230 bar - In G 1" - Out G 1"

TECHNICAL DATA

	Geometrical capacity			Max rpm		Max abs pressure Bar/PSI	Max vacuum % (inHg)	Max continuous vacuum % (inHg)	Power at max vacuum kW (HP)	Weight kg			
	m³/h	l/min	cfm	M	P/D/H					M	P	D	H
MEC 5000	369	6150	217	600	1400	2,5 (36)	94% (28,0")	60% (18")	11 (14,7)	130	121	121	123
MEC 6500	420	7000	247	600	1400	2,5 (36)	94% (28,0")	60% (18")	12,5 (16,7)	148	139	139	141
MEC 8000	486	8100	286	600	1400	2,5 (36)	94% (28,0")	60% (18")	16 (21,4)	160	151	151	153

OPTIONALS



Long Life Blades



Automatic Lubrication
MEC 5000: Single lubrication point
MEC 6500/8000: double lubrication points



Side Outlet
With two revolving elbows



Double Outlet
Ø 60 mm



Revolving Elbow
Ø 60 mm /
Ø 76 mm (3") /
Ø 80 mm



EN 707 Lever
Code 6080200161



Hydraulic Changeover
Code 6080200175



Hydraulic Revolving Changeover
Code 5090000073



Pneumatic Revolving Changeover
Code 6080200114



Battioni Vacuum Pump Oil
Code 5070200100



Customized Painting

ACCESSORIES



**Vacuum Relief Valve
1 1/2**
Code 5100200012
Setting range:
-0,3 bar / -0,8 bar
Working temperature:
-20°C / +90°C
Thread: G 1 1/2
Weight: 0,65 kg



**Overpressure Safety
Valve - 1 1/2**
Code 5100200010
Setting range:
+0,3 bar / +1,5 bar
Working temperature:
-20°C / +90°C
Thread: G 1 1/2
Weight: 1,02 kg



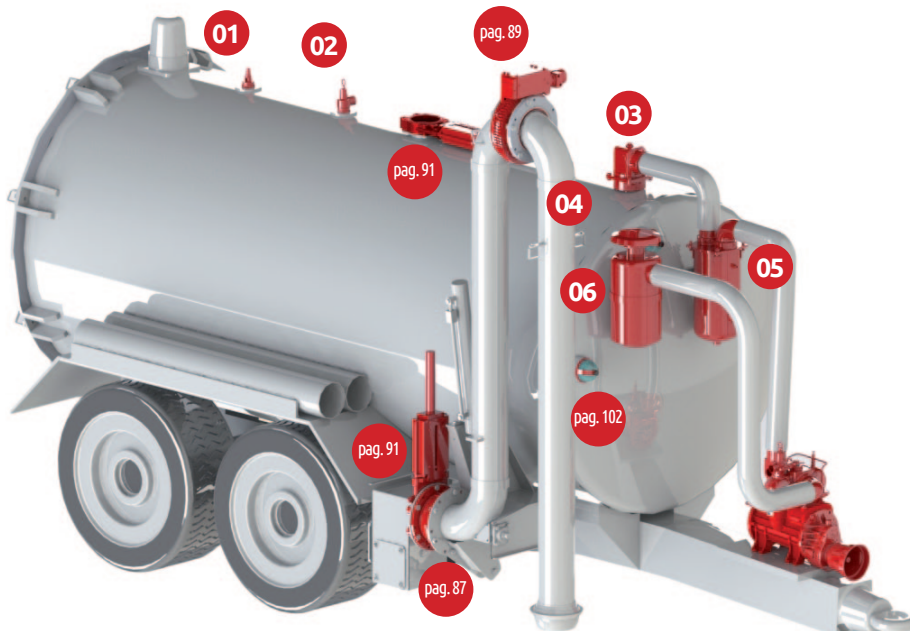
Filter-Silencer
Code 5090000044-Ø 80
MEC 6500/8000
Code 5090000083-Ø 80
MEC 5000
Weight: 7 kg (9.9 lb)



Rain Cap
Code 5090000061
MEC 6500/8000
Code 5090000060
MEC 5000
For Filter/silencer only



Pre-Filter
Code 5090000046
MEC 6500/8000
Code 5090000045
MEC 5000
For Filter/silencer only



Tank with side pipe



**Primary Overflow
Valve - Single Rubber
Ball**
Code 6100200007 - Ø 60
Code 6100200008 - Ø 80
Iron ring to be welded
Weight: 4,7/9,6 kg



**Secondary Valve -
Single Rubber Ball**
Code 6100200004 - Ø 60
Code 6100200005 - Ø 80
Weight: 18,5/20,5 kg



Discharge Valve - 3/4"
Code 5040200006
To be fitted on Secondary
valve



**Gauge - Ø 80 mm Axial
Connection**
Code 5101700007
To be fitted on Secondary
valve