

KTS

840 - 960 - 1080

Technical catalogue

Catalogo tecnico

Technischer Katalog



Battioni®
Pagani

Setting the pace since 1953

Battioni Pagani Pompe S.p.A.

Via Enzo Ferrari, 2
43058 Sorbolo (PR) - Italy

Ph. +39 0521 663203

Fax +39 0521 663206



www.bapag.it
info@bapag.it





Battioni®
Pagani

Setting the pace since 1953

Kit Aluminum Final Air Filter

Kit filtro aria alluminio
Saugfilter Satz

Automatic lubrication pump as standard

Pompa di lubrificazione automatica di serie
Automatische Schmierung als Serie



Integrated cooling pump as standard

Pompa di raffreddamento integrato di serie
Integrierte Kühlpumpe

Painting RAL 7021, resistant to 240 hours corrosion protection – salt- and fog/haze tested

Verniciatura RAL 7021, resistente a 240 ore di esposizione in nebbia salina

Lackierung RAL 7021, beständig gegen 240 Stunden Salz- und Nebeltest

Watercooling in the body and flanges

Raffreddamento ad acqua su corpo e flange
Wasserkühlung im Körper und in den Flanschen

High wearing resistance thanks to cast-iron with high hardness

Elevata resistenza ad usura grazie a ghisa ad alta durezza
Hohe Festigkeit zu Abnutzung für Gußeisen mit hohe Härte

Long Life Blades as standard

Palette Long Life di serie
Long Life Schaufeln als serie



Cooling



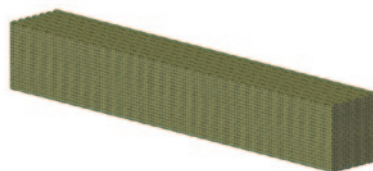
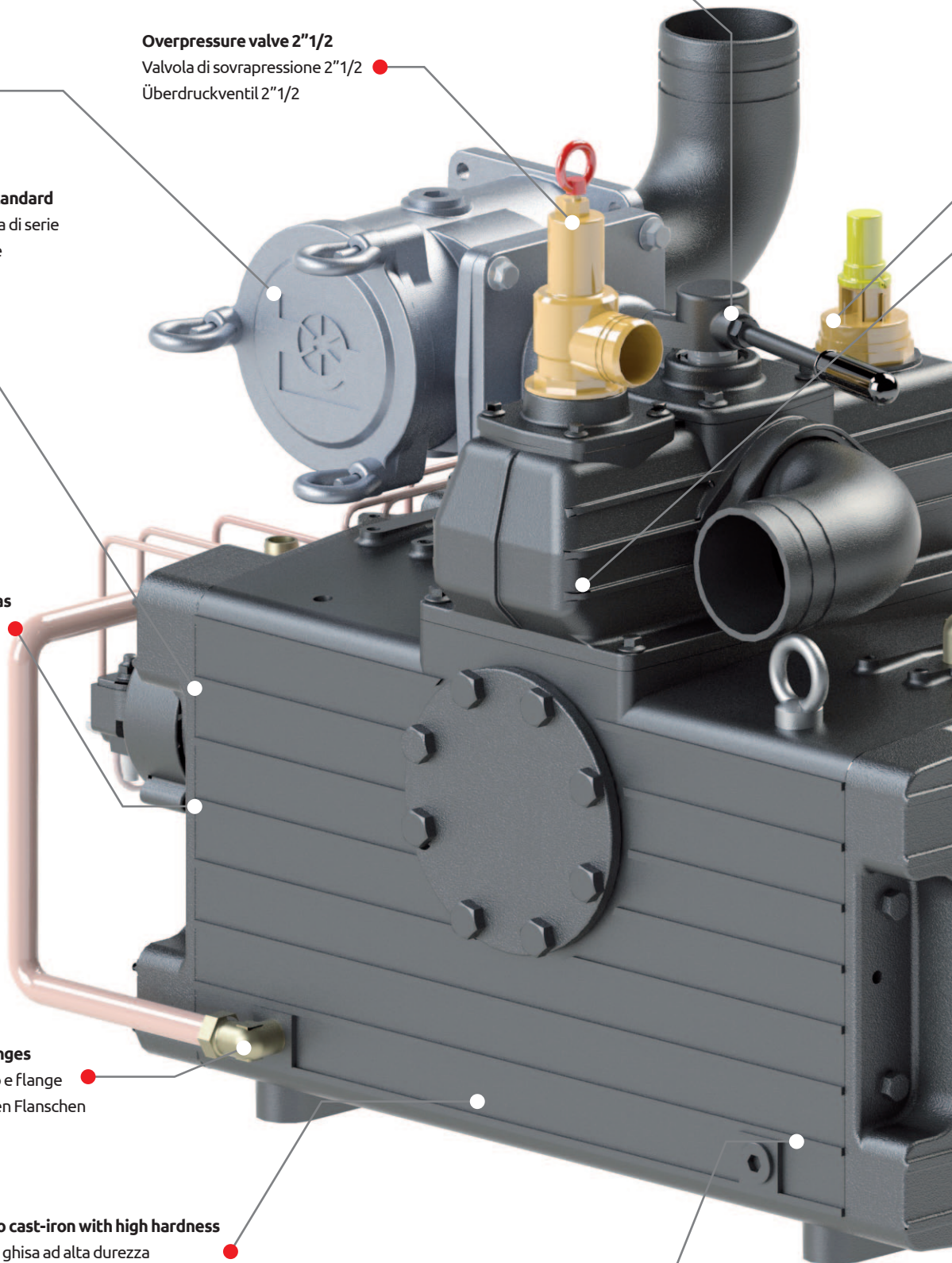
LIQUID COOLED -
ROTARY VANES
VACUUM/PRESSURE
PUMPS

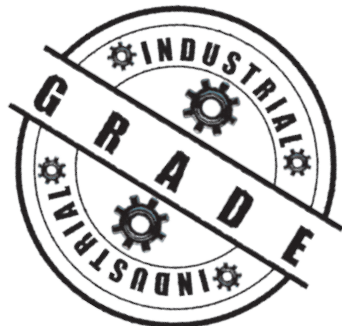
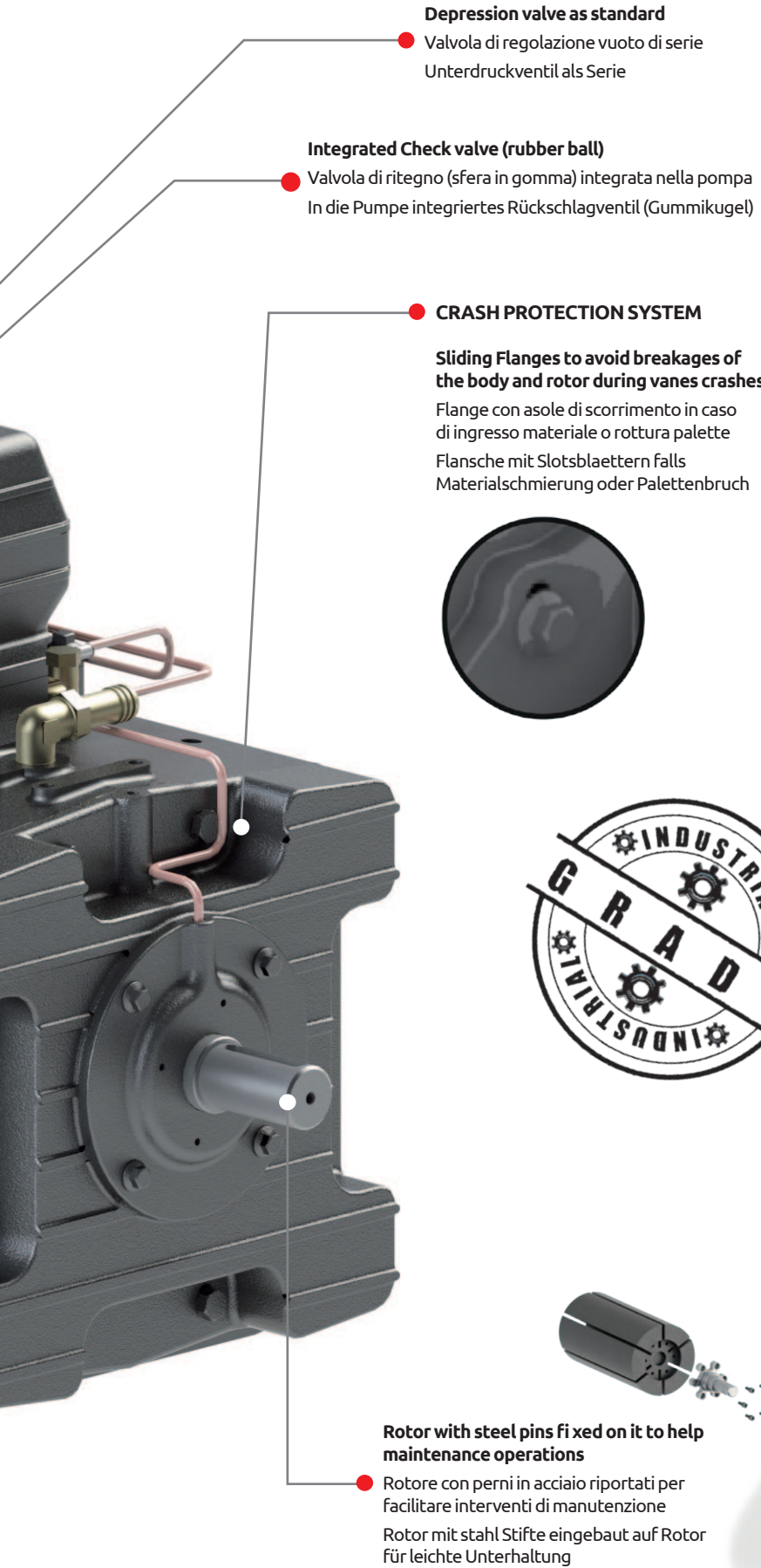
Selector vacuum - pressure

Selettore Vuoto - Pressione
Wähler von Vakuum/Druck

Overpressure valve 2"1/2

Valvola di sovrappressione 2"1/2
Überdruckventil 2"1/2





VERSIONS



KTS - MFR/
MAFR



KTS - PFR



KTS - DFR



KTS - HFR

Liquid cooled - Rotary
Vanes Vacuum/Pressure
pumps



The picture is only for informative purpose.
See the table on page 81 for the complete list of the available optionals.



KTS

840 - 960 - 1080



**Battioni®
Pagani**

Setting the pace since 1953

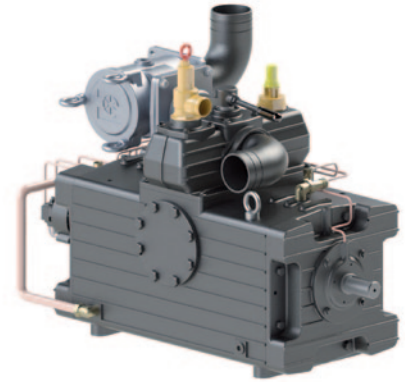
KTS – The Incredible

The KTS pump series features liquid cooled housing and flanges enabling continuous operation in vacuum and in pressure modes.

The KTS design assures maximum cooling thanks to the wide cooling liquid chambers and to the high flow capacity of the integrated water pump.

The KTS Crash Protection System prevents the housing or the rotor to break of in case of vanes crash. Therefore the pump is easily repairable inexpensively in field.

The KTS oversized robust construction makes this pump ideal for heavy duty applications where long time continuous non-stop operation is required (i.e. oil fields, combined vacuum trucks, industrial applications). The KTS series is the ideal choice for professional users and contractors.

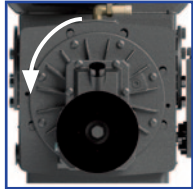


STANDARD FEATURES

- Long Life Blades, 60 l/min integrated cooling pump, 4-ways valve, integrated check valve, 4 points automatic lubrication by copper pipes, side outlets, exhaust elbows, depression valve, overpressure valve.

VERSIONS

CCW as standard



Version MFR/MAFR

Splined shaft
1"3/8 - Z6 ISO 500

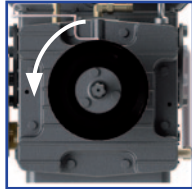
CCW on request CW as standard



Version PFR

Smooth Cylindrical shaft,
Ø 42, lenght 80 mm
Parallel key UNI 6604

CCW as standard



Version DFR

Splined shaft
1"3/8 - Z6 ISO 500

CW as standard



Version HFR

Group 4
108,9 cc/rev - Pmax 250
bar - In G 1" - Out G 1" 1/4

TECHNICAL DATA

	Geometrical capacity			Max rpm			Max abs pressure Bar/PSI	Max vacuum % (inHg)	Max continuous vacuum % (inHg)	Power at max vacuum kW (HP)	Weight kg			
	m³/h	l/min	cfm	MFR	MAFR	PFR DFR HFR					MFR MAFR	PFR	DFR	HFR
KTS 840	846	14100	497,93	600	1000	1200	2,5 (36)	95%(28,5")	95%(28,5")	33 (44,2)	406	380	380	390
KTS 960	972	16200	572,10	600	1000	1200	2,5 (36)	95%(28,5")	95%(28,5")	39 (52,2)	426	400	400	410
KTS 1080	1080	18000	635,66	600	1000	1200	2,5 (36)	95%(28,5")	95%(28,5")	45 (60,3)	459	433	433	443

OPTIONALS



Kit Aluminum Final Air Filter 1300
Code 6080200290



Hydraulic Revolving Changeover
Code 5090000010



Pneumatic Revolving Changeover
Code 6080200116



Pneumatic Revolving Changeover - 3 positions
Code 6080200294



Battioni Vacuum Pump Oil
Code 5070200100



Customized Painting

ACCESSORIES



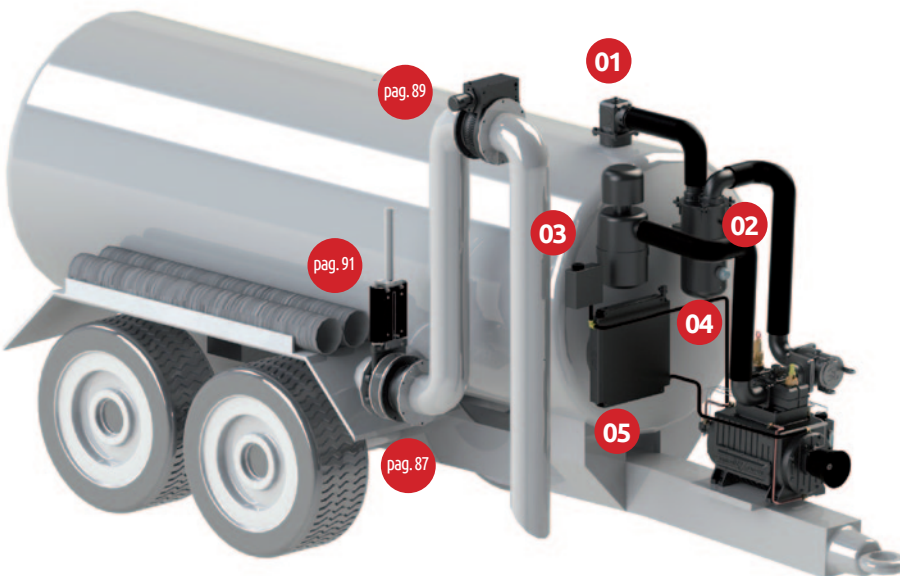
Primary Overflow Valve – Two Balls

Code 6100200030 - Ø76
Code 6100200025 - Ø80
Code 6100200026 - Ø100
Iron ring to be welded
Weight: 13,9/14,0 kg



Primary Overflow Valve – One SS Ball

Code 6100200027 - Ø80 SS
Code 6100200028 - Ø100 SS
Ball material: AISI 316
Iron ring to be welded
Weight: 13,8/13,9 kg



Filter – Silencer

Code 5090000022
Hose connection: Ø 100 mm
Weight: 30 kg
Length: 1200 mm



Air-Water Cooler with Thermostat

Code 5090000081 – 12V
Code 5090000082 – 24V
Weight: 17,8 kg

Tank with side pipe



Cyclon valve –1100

Code 6100200033 - Ø100
Housing: Galvanized Mild Steel
Cover: aluminum
Ball: AISI 316
Weight: 35 Kg



Cyclon valve –1100 SS

Code 6100200034 - Ø100
Housing: AISI 304
Cover: aluminum
Ball: AISI 316
Weight: 35 kg



Discharge valve - 1" ½

Code 504020015
To be fitted on Secondary valve



Gauge – Ø 80 mm Axial Connection

Code 5101700007
To be fitted on Secondary valve