

# BR

40 - 80 - 120 - 160 - 200 - 240 - 280

Technical catalogue

Catalogo tecnico

Technischer Katalog



**Battioni®**  
**Pagani**

*Setting the pace since 1953*

**Battioni Pagani Pompe S.p.A.**

Via Enzo Ferrari, 2  
43058 Sorbolo (PR) - Italy

Ph. +39 0521 663203

Fax +39 0521 663206



[www.bapag.it](http://www.bapag.it)  
[info@bapag.it](mailto:info@bapag.it)





**Battioni®  
Pagani**

*Setting the pace since 1953*

**Low cost stator and lobes replacement**

Sostituzione economica di statori e lobi

Wirtschaftlicher Austausch von Statoren und Kolben

**Wear-resistant special steel plates standard**

Piastre anti-usura in acciaio speciale di serie

Spezielle Verschleißschutzplatten serienmäßig



**Available coatings are:  
NBR rubber, SBR rubber,  
FKM rubber, EPDM rubber**

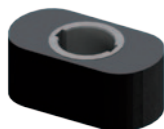
Rivestimenti disponibili:  
gomma NBR, gomma SBR,  
gomma FKM, gomma EPDM

Verfügbare Ummantelung:  
NBR, SBR, FKM und EPDM

**Bilobe rotors**

Rotori bilobati

Doppelkolbenrotoren



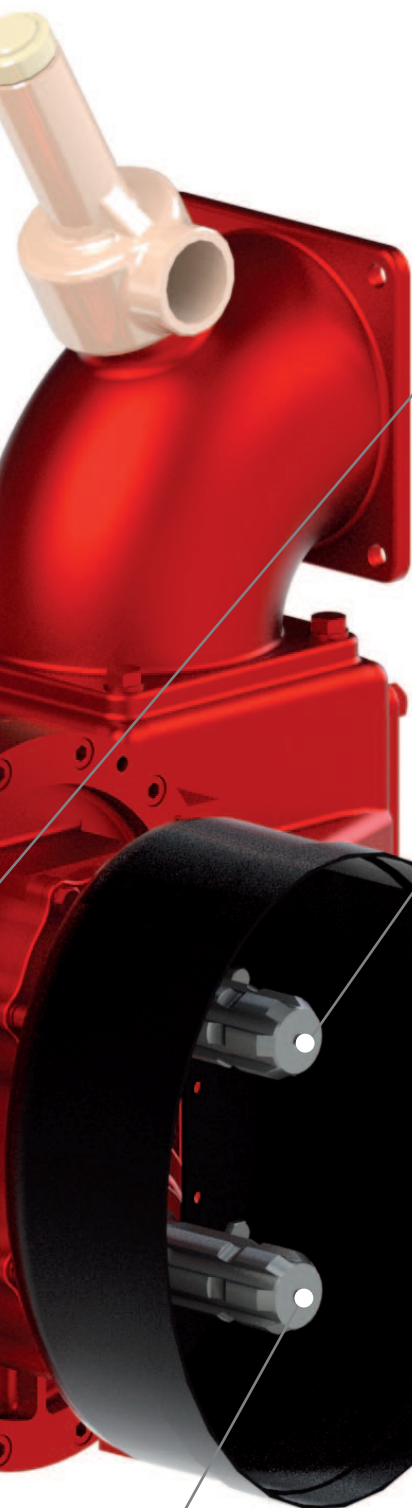
**Double splined shaft to reverse  
rotational direction**

Doppio albero per versione D per  
invertire senso di rotazione

Doppelte Welle für Ausführung D zur  
Inversion der Rotationsrichtung



Self Priming  
Rotary Lobe  
Liquid Transfer  
Pumps



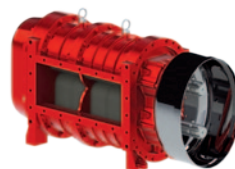
● **FKM sealings up to 10 bar resistant**

Tenute in FKM per pressioni fino a 10 bar  
Dichtungen aus FKM für Druck von bis zu 10 bar

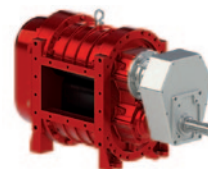
● **Double bearings shaft support for high pressure resistance**

Albero sostenuto da due cuscinetti per alte pressioni  
Welle gehalten von zwei Hochdrucklagern

## VERSIONS



BR - D



BR - EL



BR - H



BR - HM



BR - P

**BR** Ideal for high pressures





# BR

## 40 - 80 - 120 - 160 - 200 - 240 - 280

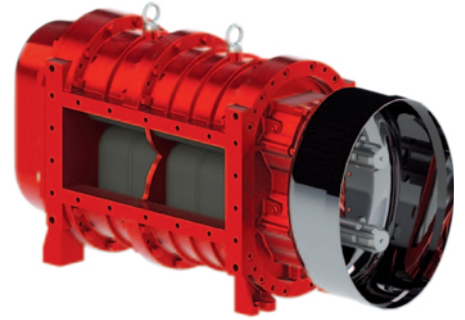


**Battioni®  
Pagani**

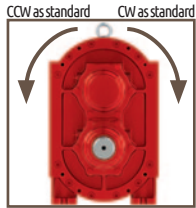
*Setting the pace since 1953*

### BR – The simply reliable

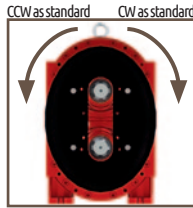
The BR series of positive displacement rotary lobes pumps are utilized for liquids and muds handling. It requires absence of abrasives and solid bodies less than 20mm wide. The BR series is equipped by replaceable wear-resistant plates to reduce maintenance costs. The BR features a robust design thanks to the double shaft support that enables operation at high working pressure and significant vibrations reduction. The BR simple and modular design gives high performances at low cost. The pump is ideal for agricultural applications or as auxiliary pump in vacuum trucks.



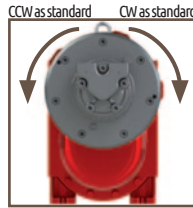
### VERSIONS



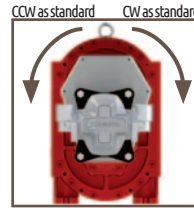
**Version P**  
**BR 40/80/120/160**  
Smooth Cylindrical shaft,  
Ø 38, length: 100 mm  
Parallel key UNI 6604  
**BR 200/240/280**  
Smooth Cylindrical shaft,  
Ø 48, length: 120 mm  
Parallel key UNI 6604



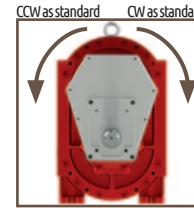
**Version D**  
Splined shaft  
1"3/8 - Z6 ISO 500



**Version H**  
304 cc/rev  
Pmax 250 bar  
In G 1" - Out G 1" 1/4



**Version HM**  
Group 3  
73,82 cc/rev  
Pmax 180 bar  
In G 1" - Out G 1" 1/4



**Version EL**  
Splined shaft  
1"3/8 - Z6 ISO 500

### TECHNICAL DATA

	Geometrical capacity			Max rpm			Max Pressure Abs Bar (PSI)		Power Required at Max Pressure kW (hp)		Weight kg				
	m³/h	l/min	cfm	P/D	H	HM/EL	P/D/H	HM/EL	P/D/H	HM/EL	P	D	H	HM	EL
BR 40	42	710	25	540	/	1620	10 (145)	10 (145)	13 (17,4)	13 (17,4)	101	103	/	107	107
BR 80	85	1425	50	540	/	1620	10 (145)	10 (145)	27 (36,2)	27 (36,2)	119	121	/	125	125
BR 120	127	2125	75	540	/	1620	10 (145)	6 (87)	39 (52,2)	25 (33,5)	137	139	/	143	143
BR 160	172	2875	101	540	/	1620	8 (116)	5 (72)	43 (57,6)	29 (38,9)	161	163	/	167	167
BR 200	210	3500	123	540	540	/	7 (101)	/	48 (64,3)	/	181	182	185	/	/
BR 240	255	4250	150	540	540	/	6 (86)	/	50 (67,0)	/	197	198	201	/	/
BR 280	297	4950	174	540	540	/	5 (72)	/	52 (69,7)	/	217	218	221	/	/

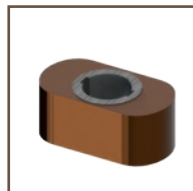
### OPTIONALS



**SBR Rubber Lobes**



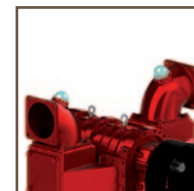
**EPDM Rubber Lobes**



**FKM Rubber Lobes**



**Lubricated Sealings Kit**



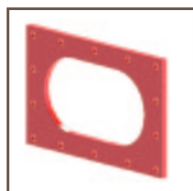
**BR Elbows Kit**

Code 6080200024 - BR 80  
Code 6080200025 - BR 120  
Code 6080200026 - BR 160  
Code 6080200027 - BR 200  
Code 6080200028 - BR 240  
Code 6080200029 - BR 280

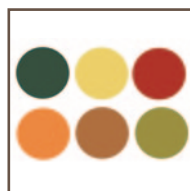


**Overpressure Valve 2" - 2" 1/2**

Code 5100200033  
BR 40-80-120-160  
Code 5100200034  
BR 200-240-280



**Coupling Flange BR**



**Customized Painting**

## FLOW-PRESSURE CHARTS

