

BR - EVO

50 - 90 - 170 - 260

Technical catalogue

Catalogo tecnico

Technischer Katalog



Battioni®
Pagani

Setting the pace since 1953

Battioni Pagani Pompe S.p.A.

Via Enzo Ferrari, 2
43058 Sorbolo (PR) - Italy

Ph. +39 0521 663203

Fax +39 0521 663206



www.bapag.it
info@bapag.it





**Battioni®
Pagani**

Setting the pace since 1953

Easy maintenance rear shaft support (standard on BR EVO 170 and 260)

Supporto posteriore per alberi easy maintenance (di serie per BR EVO 170 e 260)

Halterung vorn für Wellen Easy Maintenance (serienmäßig für BREVO 170 und 260)

Friendly Maintenance

Facile manutenzione e pulizia

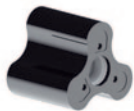
Einfache Wartung und Reinigung



Trilobe rotor design standard. Available coatings are: NBR rubber, FKM rubber, EPDM rubber.

Geometria trilobata del rotore di serie.
Rivestimenti disponibili: gomma NBR, gomma FKM, gomma EPDM.

Kleeblattform des serienmäßigen Rotors.
Verfügbare Ummantelung: NBR, SBR, FKM und EPDM



Tungsteno carbide (Widia) seals: specifically designed for heavy duty applications to grant maximum wear-resistance

Tenute meccaniche in carburo di tungsteno (Widia): studiate per usi gravosi e anti-usura.

Dichtungen aus Wolframcarbid (Widia)

Seals cooling room standard

The seals cooling room is included as standard feature to grant the cooling and lubrication of the tungsten carbide seals (Widia).

Camera raffreddamento tenute di serie. Permette il raffreddamento e la lubrificazione delle tenute in carburo di tungsteno (Widia).

Kühlkammer Dichtungen serienmäßig



Self Priming
Rotary Lobe
Liquid Transfer
Pumps

BR EVO

50 - 90 - 170 - 260



● **Heavy duty shafts standard**

Alberi per usi gravosi di serie
Wellen für starke Beanspruchung serienmäßig

● **Wear-resistant special steel plates standard**

Piastre anti-usura in acciaio speciale di serie
Spezielle Verschleißschutzplatten serienmäßig

VERSIONS



BREVO - D

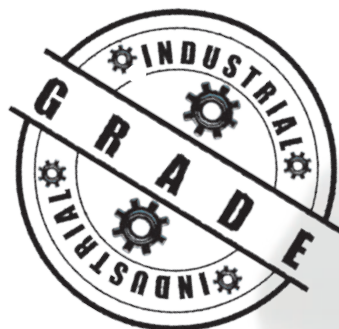


BREVO - P



BREVO - H

BR EVO Friendly Maintenance from rear cover!



The picture is only for informative purpose.
See the table on page 81 for the complete list of the available optionals.

www.bapag.it

Self Priming Rotary Lobe
Liquid Transfer Pumps



BR EVO

50 - 90 - 170 - 260

**Battioni®
Pagani**
Setting the pace since 1953

BR-EVO – The evolution

The BR-EVO series of positive displacement rotary lobes pumps is the evolution of the BR pump. Utilized for liquids and muds handling, the BR-EVO requires absence of abrasives and solid bodies less than 30mm wide.

The BR-EVO gearbox is a separate part from the pumping group. This prevents the gearbox to be damaged in case of a break of the mechanical seals.

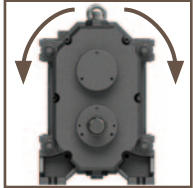
The BR-EVO features trilobal lobes design and cooled WIDIA mechanical seals.

The BR-EVO has been specifically designed for in field easy maintenance: rubber lobes, mechanical seals and wear-resistant plates can be replaced without having to remove the pump from the truck system and without having to open the pipes.



VERSIONS

CCW as standard CW as standard



Version P

BR EVO 50

Smooth Cylindrical shaft, Ø 28, lenght 60 mm

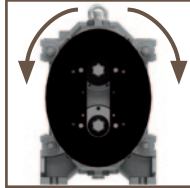
Parallel key UNI 6604

BR EVO 90-170-260

Smooth Cylindrical shaft, Ø 38, lenght 80 mm

Parallel key UNI 6604

CCW as standard CW as standard

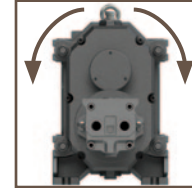


Version D

Splined shaft

1"3/8 - Z6 ISO 500

CCW as standard CW as standard



Version H

BR EVO 50: 99.8 cc/rev - Pmax 175 bar -

In G 1/2" - Out G 1/2"

BR EVO 90-170: 201.4 cc/rev - Pmax 175 bar -

In G 3/4" - Out G 3/4"

BR EVO 260: 326.3 cc/rev - Pmax 175 bar -

In G 3/4" - Out G 3/4"

TECHNICAL DATA

	Geometrical capacity			Max rpm			Max Pressure Abs Bar (PSI)			Power Required at Max Pressure kW (hp)			Weight kg		
	m³/h	l/min	cfm	P	D	H	P	D	H	P	D	H	P	D	H
BR EVO - 50	38	633	22	600	600	600	10 (145)	10 (145)	10 (145)	11 (14,7)	11 (14,7)	11 (14,7)	80	82	85
BR EVO - 90	94	1567	55	600	600	/	8 (116)	8 (116)	8 (116)	19 (25,4)	19 (25,4)	19 (25,4)	150	152	156
BR EVO - 170	166	2767	98	600	600	/	8 (116)	8 (116)	8 (116)	29 (38,9)	29 (38,9)	29 (38,9)	165	167	171
BR EVO - 260	283	4718	166	600	600	/	6 (86)	6 (86)	6 (86)	44 (59,0)	44 (59,0)	44 (59,0)	214	216	220

OPTIONALS



SBR Rubber Lobes



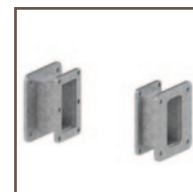
FKM Rubber Lobes



EPDM Rubber Lobes



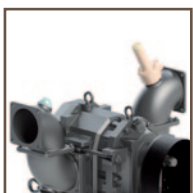
Round Suction Hose Connectors Kit
Code 4440001201
BR EVO 90
Code 4440001202
BR EVO 170
Code 4440001203
BR EVO 260



Square Suction Hose Connectors Kit
Code 4011501034
BR EVO 90
Code 4011501035
BR EVO 170



Overpressure Valve 2" - 2" 1/2
Code 5100200033
BR EVO 50-90-170
Code 5100200034
BR EVO 260



Elbows Kit

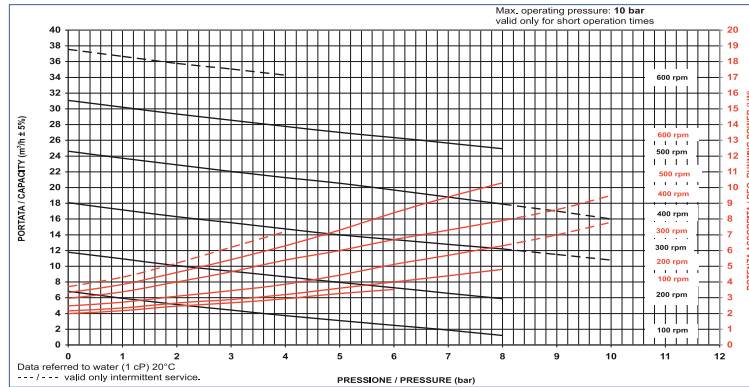


Customized Painting

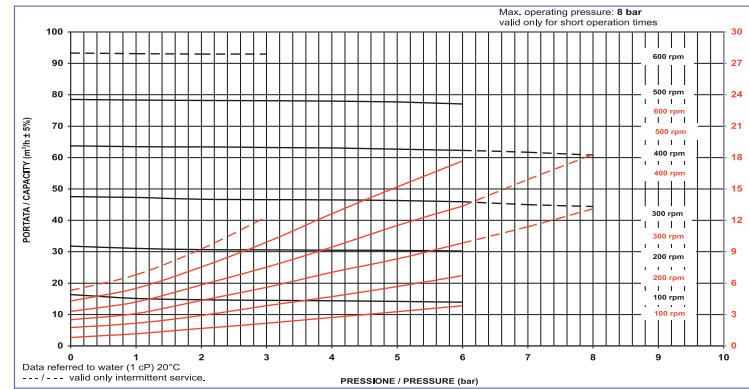


FLOW-PRESSURE CHARTS

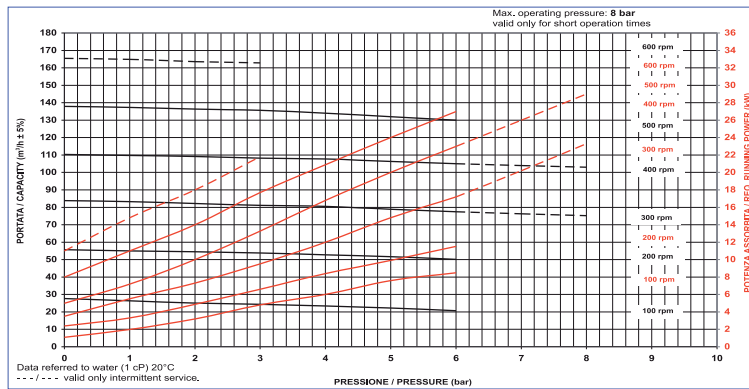
BR EVO 50



BR EVO 90



BR EVO 170



BR EVO 260

