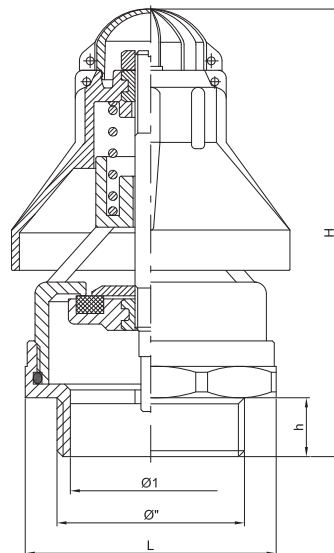


**art. 0810** filetto GAS**art. 0811** filetto NPT**valvola di depressione***depression valve**soupape de dépression**Unterdruckventil**valvula de seguridad (vacío)***Art. 0810** / Item 0810**Filettatura: gas cilindrica UNI EN ISO 228/1**

Thread: BSP parallel UNI EN ISO 228/1

Art. 0811 / Item 0811**Filettatura: conico NPT USAS B 2.1**

Thread: conical NPT USAS B 2.1



Ø"	1"1/2
Ø1	41
H	113
h	15
L	67
gr ~	460

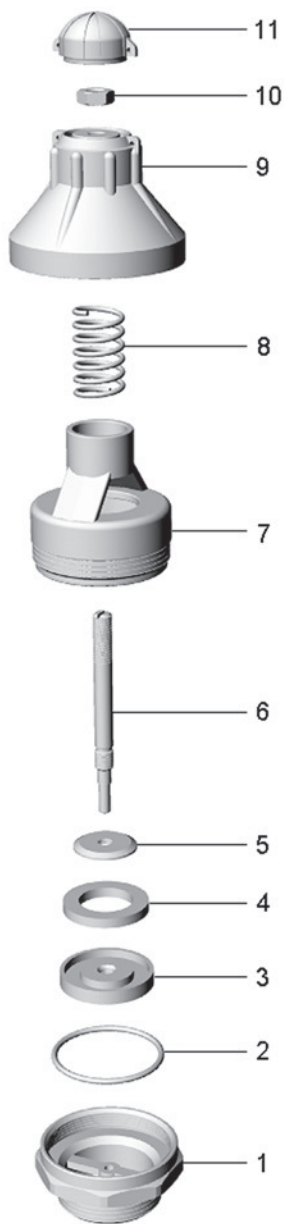
Codici di ordinazione

Purchase article numbers

Filetto GAS
GAS threadFiletto NPT
NPT thread**Valvola di depressione 1"1/2**

Depression valve 1"1/2

ARZO 0810 040 000**ARZO 0811 040 000****A richiesta si fornisce la valvola tarata e piombata / On request the valve is supplied setted and sealed**



Campo di taratura

Setting range

DN	1"1/2
P (bar)	-0,3 ÷ -0,8
P (PSI)	-4,3 ÷ -11,6
T (°C)	-15 +60

POS.	CODICE / CODE	DENOMINAZIONE	DENOMINATION	MATERIALE	MATERIAL
1	SOZO 0810 040 009	RACCORDO SEDE 1"1/2 GAS	SEAT CONNECTION 1"1/2 GAS	OTTONE UNI EN 12165	UNI EN 12165 BRASS
1	SOZO 0811 040 009	RACCORDO SEDE 1"1/2 NPT	SEAT CONNECTION 1"1/2 NPT	OTTONE UNI EN 12165	UNI EN 12165 BRASS
2	..OR 0810 040 010	OR 3218 (Øi 55,25×2,62)	O RING 3218 (Øi 55,25×2,62)	GOMMA NBR 70	NBR 70 RUBBER
3	SPZO 0810 040 005	PORTAGUARNIZIONE	GASKET HOLDER	OTTONE UNI EN 12164	UNI EN 12164 BRASS
4	GGOM 0860 032 004	GUARNIZIONE Ø30 × 24 × 4,3	GASKET Ø30 × 24 × 4,3	GOMMA NBR 60	NBR 60 RUBBER
5	TOZO 0810 040 002	ROSETTA Ø28 × 2,5 × M8	WASHER Ø28 × 2,5 × M8	OTTONE UNI EN 12164	UNI EN 12164 BRASS
6	TOZO 0810 040 003	ASTA M8	STEM M8	OTTONE UNI EN 12164	UNI EN 12164 BRASS
7	FOZO 0810 040 001	CORPO	BODY	OTTONE UNI EN 1982	UNI EN 1982 BRASS
8	MOAC 0810 040 006	MOLLA	SPRING	ACCIAIO INOX AISI 302	AISI 302 STAINLESS STEEL
9	SPZO 0810 040 007	CAMPANA DI REGOLAZIONE	ADJUSTING BELL	NYLON + VETRO	NYLON + GLASS
10	DAAC 0180 045 012	DADO M8 × 5	NUT M8 × 5	ACCIAIO INOX AISI 304	AISI 304 STAINLESS STEEL
11	SPZO 0810 040 008	TAPPO	COVER	NYLON + VETRO	NYLON + GLASS