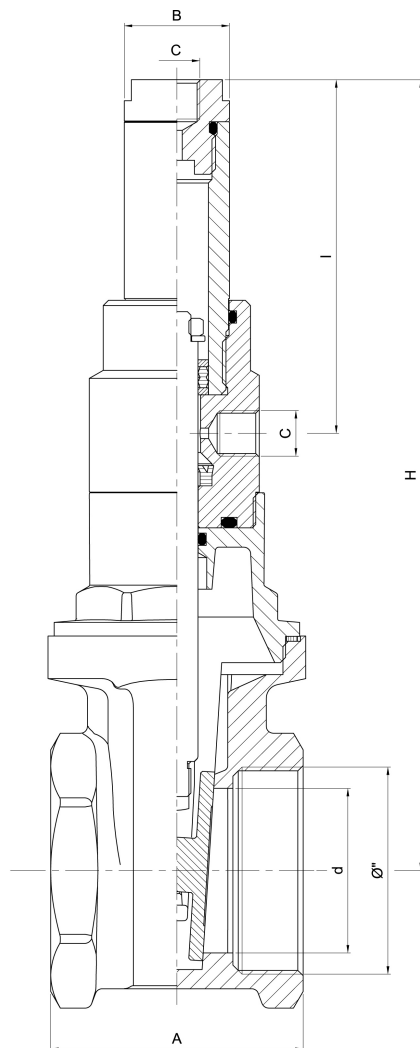


**art. 3075****Saracinesca oleodinamica***Double acting oildynamic gate valve**Vanne oléodynamique à double effet**Doppelwirkender oldynamischer Schieber**Tajadera hidráulica de doble efecto*

Ø"	1"	2"	3"	4"
A	54	72	85	97
B	30	30	30	30
C	1/4"G	1/4"G	1/4"G	1/4"G
d	24	47	70	94
I	87	101	120	152
H	162	226	282	355

**Codici di ordinazione**

Purchase article numbers

**1"****2"****3"****4"****Saracinesca oleodinamica a doppio effetto**  
Double acting oildynamic gate valve

ARIN 3075 025 000

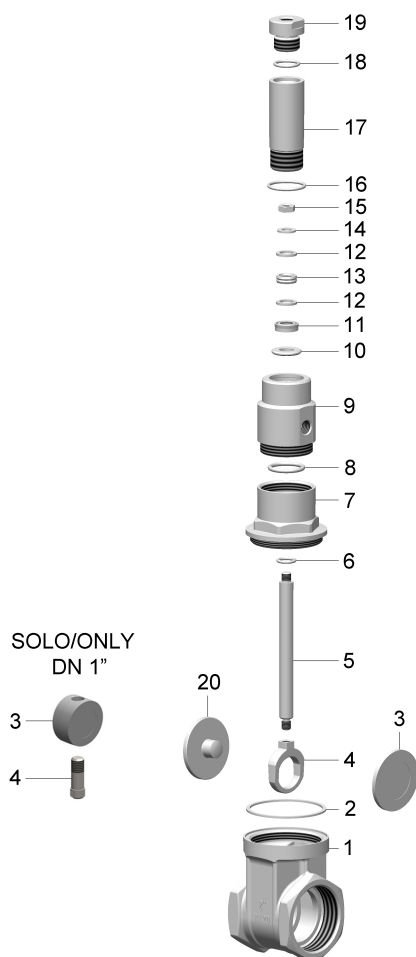
ARIN 3075 050 000

ARIN 3075 080 000

ARIN 3075 100 000

Irrigation / Irrigation  
Bewässerung / Riego

art. 3075

Condizioni di esercizio  
Work conditions

DN	1" - 2" - 3" - 4"
P (bar)	20
P (PSI)	290
T °C	-15 +80

Condizioni di esercizio cilindro  
Cylinder work conditions

DN	1" - 2" - 3" - 4"
P (bar)	max 200
P (PSI)	max 2.900
T °C	-15 +80

Tabella conversione Ø"(in) - DN (mm)

Ø"(in) - DN (mm) conversion table

Ø"	1"	2"	3"	4"
DN	025	050	080	100

POS	CODICE / CODE	DENOMINAZIONE	DENOMINATION	MATERIALE	MATERIAL
1	SOIN 3074 025 001	CORPO 1"	BODY 1"	OTTONE UNI EN 12165	UNI EN 12165 BRASS
1	SOIN 3074 050 001	CORPO 2"	BODY 2"	OTTONE UNI EN 12165	UNI EN 12165 BRASS
1	SOIN 3074 080 001	CORPO 3"	BODY 3"	OTTONE UNI EN 12165	UNI EN 12165 BRASS
1	SOIN 3074 100 001	CORPO 4"	BODY 4"	OTTONE UNI EN 12165	UNI EN 12165 BRASS
2	GGUA 3074 (DN) 004	GUARNIZIONE Ø"...	GASKET Ø"...	GUAMOTOR	GUAMOTOR
3	TOIN 3075 025 002	CUNEO 1"	GATE 1"	OTTONE UNI EN 12164	UNI EN 12164 BRASS
3	TOIN 3074 050 02B	DISCO FEMMINA 2"	FEMALE DISC 2"	OTTONE UNI EN 12164	UNI EN 12164 BRASS
3	FOIN 3074 080 02B	DISCO FEMMINA 3"	FEMALE DISC 3"	OTTONE UNI EN 1982	UNI EN 1982 BRASS
3	SOZO 0030 100 02B	DISCO FEMMINA 4"	FEMALE DISC 4"	OTTONE UNI EN 12165	UNI EN 12165 BRASS
4	TAIN 3075 025 006	TERMINALE ASTA Ø9 (1")	STEM TERMINAL Ø9 (1")	ACCIAIO INOX AISI 304	AISI 304 STAINLESS STEEL
4	SOIN 3074 050 006	TERMINALE ASTA (2"-3"-4")	STEM TERMINAL (2"-3"-4")	OTTONE UNI EN 12165	UNI EN 12165 BRASS
5	TAIN 3075 (DN) 003	ASTA Ø12 Ø"...	STEM Ø12 Ø"...	ACCIAIO INOX AISI 304	AISI 304 STAINLESS STEEL
6	..OR 1130 010 007	OR 115 (Øi 11,91×2,62)	O RING 115 (Øi 11,91×2,62)	GOMMA NBR	NBR RUBBER
7	TOIN 3075 025 005	VITONE 1"	TOP SCREW 1"	OTTONE UNI EN 12164	UNI EN 12164 BRASS
7	SOIN 3075 (DN) 005	VITONE Ø"...	TOP SCREW Ø"...	OTTONE UNI EN 12165	UNI EN 12165 BRASS
8	..OR 3074 050 012	OR 4100 (Øi 24,99×3,53) 1"-2"	O RING 4100 (Øi 24,99×3,53) 1"-2"	GOMMA NBR	NBR RUBBER
8	..OR 3074 050 010	OR 4131 (Øi 32,93×3,53) 3"-4"	O RING 4131 (Øi 32,93×3,53) 3"-4"	GOMMA NBR	NBR RUBBER
9	CILI 3075 050 009	TESTATA 2"	HEAD 2"	ACCIAIO ZINCATO	ZINC PLATED STEEL
9	CILI 3075 080 009	TESTATA 3"-4"	HEAD 3"-4"	ACCIAIO ZINCATO	ZINC PLATED STEEL
10	TAIN 3075 050 015	RONDELLA Ø25,8×12,6×3	WASHER Ø25,8×12,6×3	ACCIAIO ZINCATO	ZINC PLATED STEEL
11	GKIT 3075 050 008	GUARNIZIONE A20-12-5,8	GASKET A20-12-5,8	POLIURETANO	POLYURETHANE
12	CILI 3075 050 014	ANELLO Ø18×12×2	RING Ø18×12×2	DELIRIN	DELIRIN
13	GKIT 3075 050 010	GUARNIZIONE OP12-18-6	GASKET OP12-18-6	POLIURETANO	POLYURETHANE
14	ROAC 0250 120 022	RONDELLA Ø16×8,4×1,6	WASHER Ø16×8,4×1,6	ACCIAIO INOX AISI 304	AISI 304 STAINLESS STEEL
15	DAAC 0180 045 012	DADO M8×5	NUT M8×5	ACCIAIO INOX AISI 304	AISI 304 STAINLESS STEEL
16	..OR 0500 100 009	OR 3112 (Øi 28,25×2,62)	O RING 3112 (Øi 28,25×2,62)	GOMMA NBR	NBR RUBBER
17	CILI 3075 (DN) 011	CILINDRO Ø"...	CYLINDER Ø"...	ACCIAIO ZINCATO	ZINC PLATED STEEL
18	..OR 1012 010 011	OR 123 (Øi 17,86×2,62)	O RING 123 (Øi 17,86×2,62)	GOMMA NBR	NBR RUBBER
19	CILI 3075 050 013	CULATTA	COVER	ACCIAIO ZINCATO	ZINC PLATED STEEL
20	TOIN 3074 050 02A	DISCO MASCHIO 2"	MALE DISC 2"	OTTONE UNI EN 12164	UNI EN 12164 BRASS
20	FOIN 3074 080 02A	DISCO MASCHIO 3"	MALE DISC 3"	OTTONE UNI EN 1982	UNI EN 1982 BRASS
20	SOZO 0030 100 02A	DISCO MASCHIO 4"	MALE DISC 4"	OTTONE UNI EN 12165	UNI EN 12165 BRASS